



ناتشوال فيولمكحافة الحشرات
NATURAL VIEW PEST CONTROL



✉ E-mail: info@naturalviewpestcontrol.com

☎ WhatsApp: +971 50 545 3504

☎ Contact No: +971 50 545 3504

🌐 Visit: naturalviewpestcontrol.com

📍 Address: Office 202, Al Sabi building, port Saeed Dubai, UAE.

COMPANY
NATURAL VIEW
PEST CONTROL



DON'T LET PESTS TAKE OVER YOUR HOME

We Provide You The Best Pest Control Solutions!

About us:

Natural View Pest Control Services LLC is licensed and approved by Public Health Pest Control Section with a professional interest in the management of public pests to provide safe and healthy environments. We tailor our work to your specific needs to monitor and control pests, and using our expert team of pest control specialist can deal with the issue efficiently and discreetly. We are extremely proud of our very strong team environment. Our technicians are fully certified, insured and bonded. Our technicians meet you to share any new technology, treatments ideas etc..

Our services include single calls to individual residences or monthly maintenance contracts to large and small structures such as ware-houses, grain terminals, food processing plants, schools, construction sites, hospitals, offices, public housing and similar areas. The interests of our clients and are priority #1.

We are committed to providing our clients with high quality professional advice, service and

Products. We have a high regard for the environment and public health, utilizing the latest products that demonstrate excellent results with the least risk. This allows us to maintain the highest safety standards while achieving the greatest results. Our ever expanding satisfied customer base is a testament to our success.



OUR VISION:

Natural view pest control Vision is to be one of the most preferred pest control and hygiene company in the Province and country by making everyday a safer And healthier experience for every business, home and facility.



OUR MISSION:

To make quality pest control services available to all(home to industries), always striving for excellence with integrity, reliability and effectiveness. Offering great value for money whilst ensuring customer satisfaction.



OUR SERVICES:



Cockroaches

Cockroaches are public health pest that contaminate food and eating utensils, destroy fabric and paper products and impart stains and unpleasant odors to surfaces they contact. They become pests in homes, schools, restaurants, hospitals, warehouses, offices and virtually in any structure that has food preparation or storage areas.



Bedbugs

Bedbugs are public health pest that bites human and consume bloods it causes irritation and sores or itchiness. They are active mainly at night and usually bite people while they are sleeping.



Flies

Houseflies are a danger to the health of man and animals principally because they carries and spreads disease organisms. They are mostly found in homes, restaurants and other structures where man and his domestic animals live Houseflies usually stay near their breeding places. It carries bacteria on the outside of its body, it regurgitates saliva and deposits wastes on human food.



Termite

Are you tired of termites eating your furniture, wooden walls, or home invasions? Our professionals with years of experience remove existing termites in their tracks as well as protect your furniture against future termite infestations.



Ants

Ants entering houses looking for food are a common nuisance and are one of the most abundant insect pests. Different ants have different behaviour patterns but once they take up residence in home or garden, they quickly reproduce, eat all the available food sources and can be very difficult to dislodge.



Mosquitoes

Bites from mosquitoes carrying certain viruses or parasites can cause severe illness even death. Mosquito bite causes a large area of swelling, soreness and redness. Mosquitoes mostly breed in stagnant, standing fresh water oftentimes found around the home.



Rodents

Rodents are public health pest that contaminate food, water and eating utensils, carries and spreads disease organisms They can cause structural damage to homes, apartments, offices, and electronic equipments etc.



Wasps and Bees

Wasps and bees are beneficial insects, although they are generally considered to be pests because of their ability to sting. Wasps, in particular, can become a problem in autumn when they may disrupt many outdoor activities.



Fleas

Adult Fleas are small wingless parasites that feed on the blood of your pets. They may jump onto you from your pet and bite you to feed on your blood. It causes a red, itchy bump to form at the location of the bite.

OUR PEST MANAGEMENT PROTECTION PROGRAM

INSPECTION

The cornerstone of an effective IPIVI program is a schedule of Regular inspections. These routine inspections should focus on areas where pests are most likely to appear receiving docks, storage areas, employee break rooms, sites of recent ingredient spills, etc. and identify any potential entry points, food and water sources, or harborage zones that might encourage pest problems.



IDENTIFICATION

Identification of pests found within your institution is the first crucial step in solving the problems that these invaders can cause. Proper identification will give you important information about what foods they eat, what environmental and harborage conditions they prefer, how long they live and other key biological clues.



ANALYSIS

Once we have properly identified the pest, we will figure out . Why the pest is in your facility. Is there food debris or moisture accumulation that may be attracting it? What about odors? How are the pests finding their way in – perhaps through the floors or walls? Could incoming shipments be infested? The answers to these questions will lead to the best choice of control techniques.



PREVENTIVE ACTION

As regular inspections reveal vulnerabilities in our pest management program, take steps to address them before they cause a real problem. One of the most effective prevention measures is exclusion, i.e. performing structural maintenance to close potential entry points revealed during inspection. By physically keeping pests out, we can reduce the need for chemical countermeasures. Likewise, sanitation and housekeeping will eliminate potential food and water sources, thereby reducing pest pressure.



SANITATION & DISINFECTION

Processing is often well-designed, but livestock feed by product (waste) sits in open bins or accumulates in waste load-out areas that are pest hotspots. Lingering waste residue, leakage, and waste collection sites outdoors can quickly become problematic if not managed properly.



TREATMENT SELECTION

IPM stresses the use of non-chemical control methods, such as exclusion or trapping, before chemical options. When other control methods have failed or are inappropriate for the situation, chemicals may be used in least volatile formulations in targeted areas to treat the specific pest. Often, the "right treatment" will consist of a combination of responses, from chemical treatments to baiting to trapping. But by focusing on non-chemical options first, we can ensure that your pest management program is effectively eliminating pests at the least risk to your food safety program, non-target organisms and the environment.



MONITORING

Since pest management is an on-going process, constantly monitoring your facility for pest activity and facility and operational changes can protect against infestation and help eliminate existing ones, The correct determination that pests are or are not present, and, where they are present, the efficiency of counter measures based on the results of monitoring pest activity will be dependent on the accuracy of the monitor.

DOCUMENTATION

Up-to-date pest control documentation is one of the first signs to an auditor that your facility takes pest control seriously. Important documents include a scope of services pest activity reports, service reports, corrective actions reports, trap layout maps, lists of approved pesticides, pesticide usage reports and applicator licenses.



TERMITE CONTROL SERVICES

With termites of course, everyone is aware of the serious damage that they can do to properties which is why they are so feared, the size of colonies often numbers in the millions, however in a sense that is a good thing, because it means they won't be able to stay hidden for long.

The liquid form of termite control involves laying down a large quantity of liquid chemicals, which will prevent termites from entering the property, and not allow termites which are already in the property back out, meaning that they will die.

If you have found a termite infestation, although it is serious, you should not worry too much. As long as you get on to pest control experts soon, they will be able to take care of the problem quickly. So please feel free to call our free phone number as soon as you discover any termites, or signs of termites, and we will immediately start making arrangements to eradicate the infestation.

ANTI TERMITE PRE-CONSTRUCTION TREATMENT

ANTI TERMITE POST-CONSTRUCTION TREATMENT



FUMIGATION SERVICES

We perform fumigation services including treatment of cargoes loaded into sea-going vessels, barges and containers - in ports and logistics centres worldwide. Accordingly, these services comply with stringent national and international legislation, with best practice and with globally agreed quality and safety standards.

Our fumigation and pest management services - which are effective and reliable at all stages of the supply chain include:

Fumigation of stored goods:

Fumigation of bagged and bulk agricultural commodities (e.g. cereals, cocoa, coffee, peanuts, pulses, tobacco) in silos, stacks and warehouses.

Fumigation during or prior to shipment:

- Disinfection of empty holds.
- Denaturation and coloration.

Biocide treatment of cargoes:

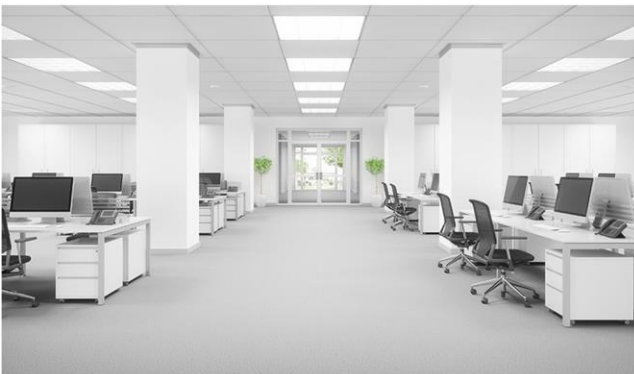
- Treatment of agricultural commodities against insects and mites.

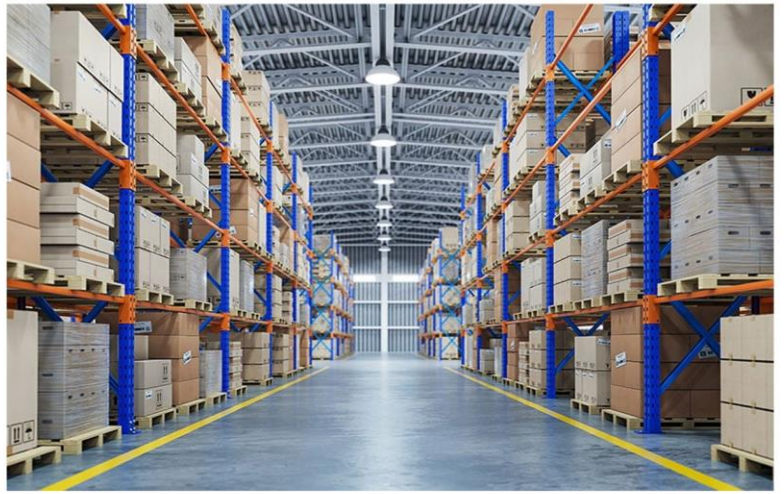
Disinfection and fumigation for the food and beverage industry (e.g. breweries, our mills, malt houses).

Quarantine fumigation of wood and timber, to obtain a phytosanitary certificate.



WE COVER COMMERCIAL & RESIDENTIAL PEST CONTROL SERVICES





GENERAL CLEANING SERVICES



OUR CLIENTS



مدرسة نورث أميركان انترناشونال



**NORTH AMERICAN
INTERNATIONAL SCHOOL**





OUR SERVICES

- COCKROACH CONTROL
- BADBUGS CONTROL
- ANTS CONTROL
- SPIDER CONTROL
- RODENT CONTROL
- WASP AND BEES CONTROL
- FLIES CONTROL
- MOSQUITOES CONTROL
- TERMITE CONTROL
- MOTH CONTROL
- BIRD CONTROL
- FLEAS CONTROL

CONSISTENT | RELIABLE | PROFESSIONAL SERVICES



ناتشوال فيولمكحافة الحشرات
NATURAL VIEW PEST CONTROL

Website: naturalviewpestcontrol.com

Email: info@naturalviewpestcontrol.com

Contact: +971 50 545 3504

